

Instructions on how to use the fine mist inhaler (Respimat®)

It is a device that contains an aqueous solution that produces a propellant-free soft mist. It generates a slow-moving cloud of mist.

When you press the dose-release button and inhale through the mouthpiece, the medicine flows into the lungs with the air you breathe in. A complete dose is released, regardless of inspiratory flow rate. This makes it easier to synchronize delivery of the medicine with inhalation.

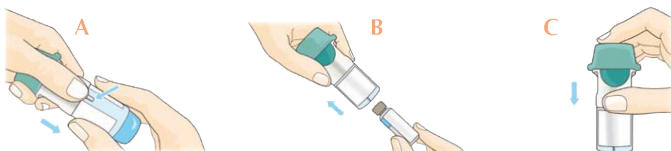
It is small and light.

When the inhaler is empty it locks automatically and cannot be used.

The mouthpiece should be cleaned with a damp cloth once a week.

Loading and priming the cartridge

Before you use this inhaler for the first time and whenever it needs a refill, a cartridge must be inserted. To do so, follow the steps below:



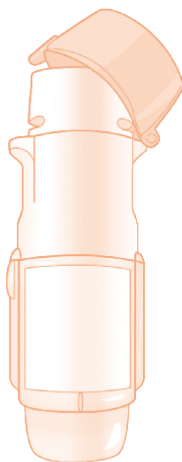
A. With the green cap closed, press the safety catch and pull off the clear base.

B. Take the cartridge out of the box. Insert the narrow end of the cartridge into the inhaler and push until you hear it click into place.

C. Press the cartridge gently against a firm surface to make sure that it is correctly inserted. Replace the clear base. The cartridge is now loaded.



D. Hold the inhaler upright with the green cap closed. Turn the base in the direction of the red arrows on the label until it clicks (half a turn).



E. Open the green cap all the way.

Point the inhaler toward the ground. Press the dose-release button.

Repeat steps D, E and F until you see a vapor cloud and then repeat three more times to make sure your inhaler is ready to be used. If you have not used your inhaler for several days, perform these 3 steps.

How to use your Respimat® inhaler

Perform the following steps while staying as relaxed as possible:

1. Hold the inhaler upright with the green cap closed. Turn the base in the direction of the red arrows on the label until it clicks (half a turn).

2. Open the green cap all the way.

3. Breathe out as fully as you can.

4. Without breathing in, close your lips around the mouthpiece without covering the air vents. Press the dose-release button and breathe in slowly and deeply through your mouth.

5. Hold your breath.

6. Breathe out slowly.

7. Close the green cap, wait for 30 to 60 seconds and repeat steps 1 to 7 to get a second puff.

8. Gargle and rinse your mouth after each use.

If you have any questions, please check with the nurse.

